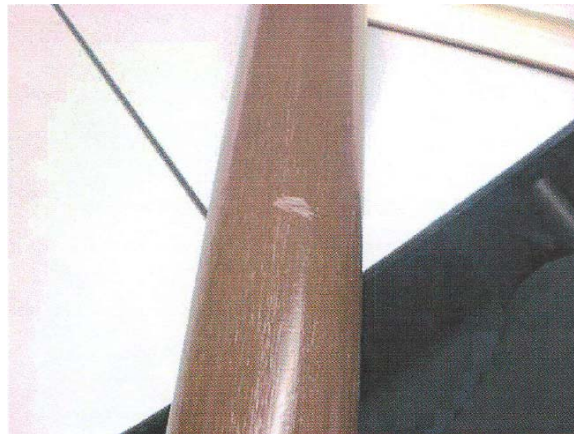




Repairing of extremely damaged surfaces

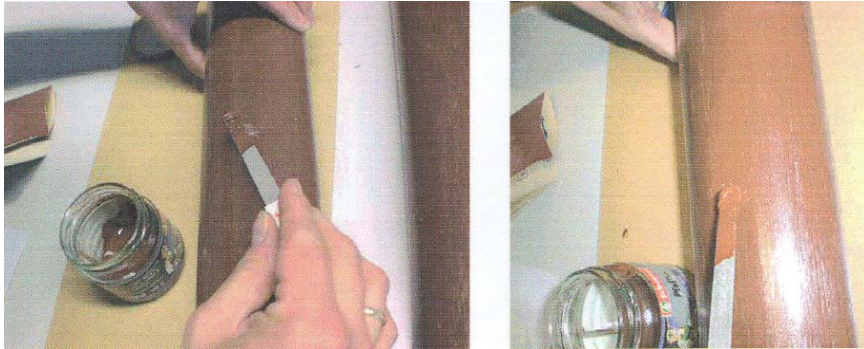
When extremely damaged (e.g. crane) the handrail can be repaired very quick on board.



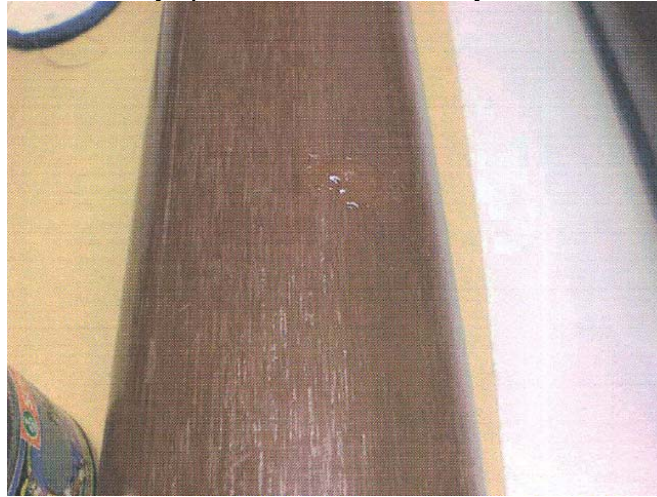
The delivered colour pigmented granule (picture with bag) will be mixed with acetone-solvent. Mixing in a can or glass in ratio 1:1. The granule is dissolving. Make a paste by twirling.



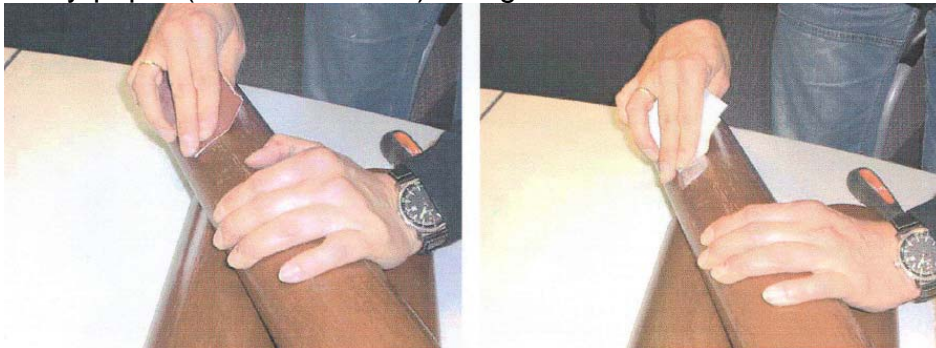
Take a spatula to repair the damaged section.



The repaired section dries very quick and is than very hard.



Take an emery-paper (600-800 screen) and grind.



At least take a universal-solvent (but no acetone) with a textil-cleaning rag to polish it.

